

Value recognized with each use.

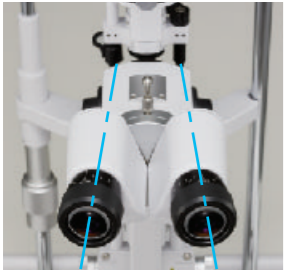
Today's New Slit Lamp Standard Built as a Premium Design.

New Premium Features

Newly designed wide-field optics, high-tech illumination for ease of use. Every specification and function perfect for daily eye exams. The new generation of Slit Lamp.

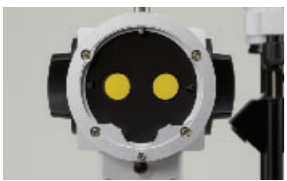
Convergence Optics

12degree convergence optics for easy image fusion. Newly designed optical alignment affording wider visibility in the eyepiece.



Built-In Yellow Filter

Internal yellow filter may be conveniently switched in/out quickly for fluorescein techniques.



Wide Field & High Eye point Eyepiece Design

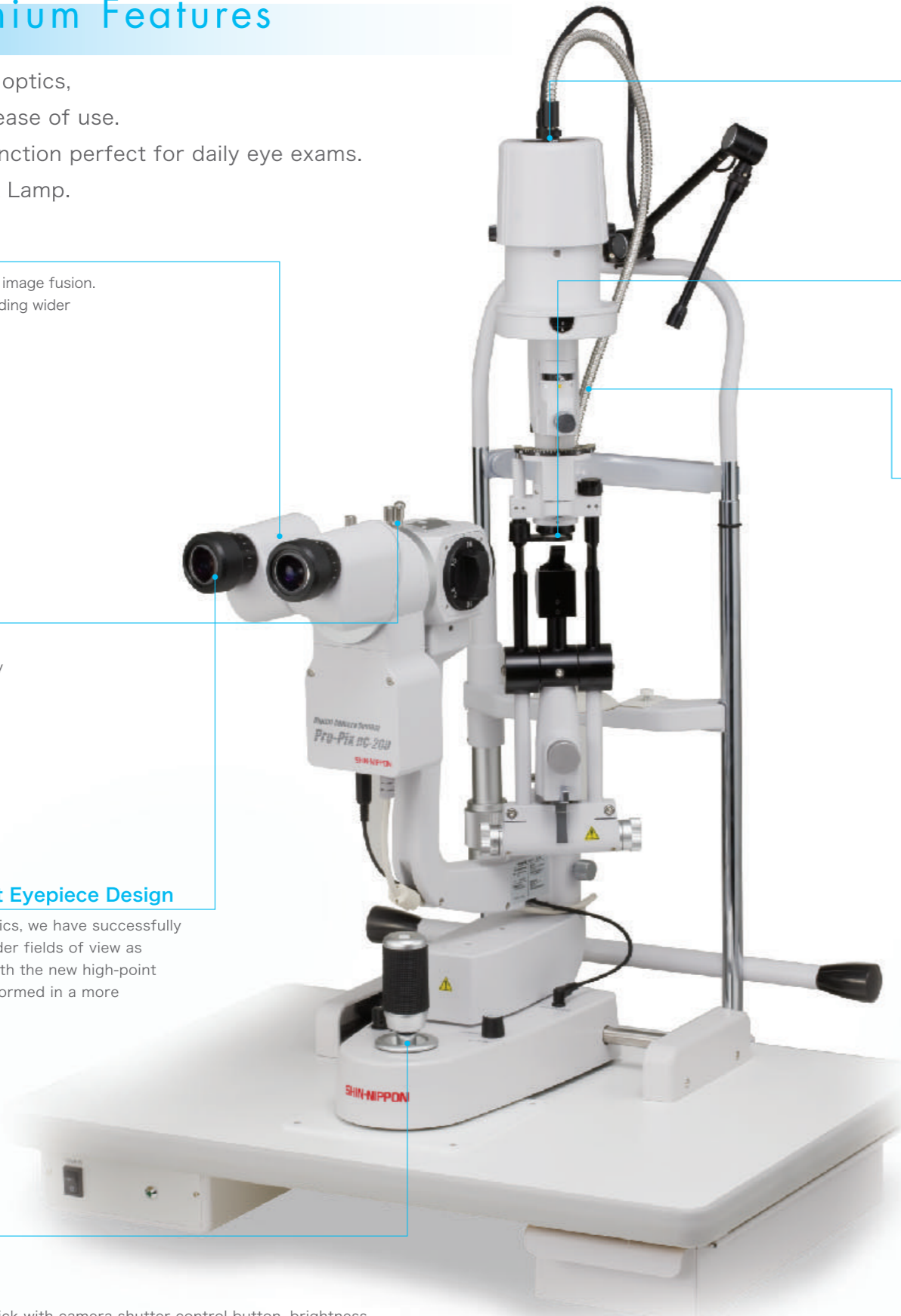
With our newly created wide filed optics, we have successfully increased the actual field of view. Wider fields of view as 36,23,14,9 & 5.9mm are achieved. With the new high-point eyepiece feature, eye exams are performed in a more natural, comfortable manner.



Centralized Control



Joystick with camera shutter control button, brightness control knob and locking control knob, routinely used functions all conveniently Localized in the joystick area for efficient, confident slit lamp control.



Illumination Source

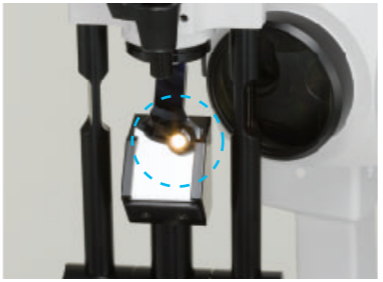
The new improved illumination pathway is created to increase overall luminance. The luminance output of the unit's 30W Halogen Lamp is comparable to our existing models with a 50W Halogen Lamp.

Expanded Slit Width & Height

A wider slit width & longer slit height capability are attractive features when combined with our new wide field optics. Slit width : 0-15 mm Slit height : 1-15 mm

Flexible Background Illuminator

The flexible back ground illuminator is easily adjustable by the operator during examinations and also for creating specialized lighting techniques during image capture.



Light Diffuser

Supplied as a standard accessory. Used for specific diffused lighting procedures when imaging capture with camera.



Headrest

An ergonomically created for patient comfort with a soft "touch", allowing secure and precise patient positioning.

Improved Working Distance

Forward and back slit lamp movement is increase up to 100mm allowing retinal exams with diagnostic and therapeutic fundus lenses.



DIGITAL CAMERA SYSTEM (PREMIUM OPTIONAL ACCESSORIES)

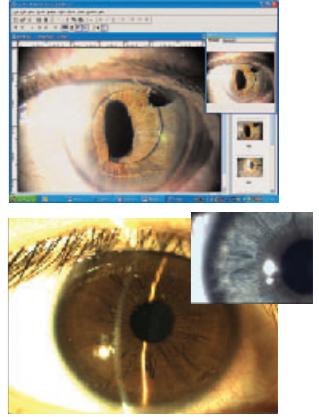
Our digital camera system "Pro-Pix" can also be attached to SL-500



| Specs | |
|--------------|---------------------------------------|
| Camera | 1/2inch COMS camera 1600 x 1200 pixel |
| Power source | USB 2.0 5V 4A |

Database Software - Standard with Pro-Pix

Software which can be installed into your PC for Photo and Video of patient examinations. Stored images may be edited.



Power Cable Not Required

Pro-Pix Camera is powered by the USB port of your PC, helps to reduce additional cable clutter.

SLIT LAMP SL-500

Specifications

| | | |
|---------------------|--------------------------|--|
| MICROSCOPE | Type | Binocular, Galilean-type, 5step drums rotation |
| | Conversion | 12 degrees |
| | Eyepieces | 12.5x High-Eyepoint |
| | Filter for Eyepiece | Yellow filter |
| | Total Magnification | 6.5x, 10x, 16x, 25x, 40x |
| | Field of View | φ36, φ23, φ14, φ9, φ5.9 (mm) |
| | Pupillary Distance | 50mm to 80mm |
| | Diopter Adjustment Range | -7D to +7D |
| Base | Side Shift | 100mm |
| | Depth Shift | 100mm |
| | Height Shift | 30mm |
| Chin-rest | Height Shift | 80mm |
| | Fixation Target | Red LED |
| ILLUMINATION SYSTEM | Slit Width | 0 to 15mm, continuous |
| | Slit Height | 1 to 15mm, continuous |
| | Diaphragm Sizes | φ0.2, φ1.3, φ8, φ15(mm) |
| | Rotation | 0 to 180 degrees |
| | Filters | Cobalt blue, 50%ND, Heat absorption, Green |
| | Light Source (Bulb) | 12V 30W Halogen lamp |
| Power Consumption | | 60VA |
| Size | Weight | 19kg |
| | Dimensions | 550mm(W) x 420mm(D) x 775mm(H) |

Standard Accessories

- Operation Manual
- Power Cable
- Dust Cover
- Chin-rest Paper
- Halogen Lamp
- Mirror
- Test Bar
- Light Guide
- Hand Rest

Additional Optional Accessories

| | | | |
|--|--|---|--|
| Camera Attachment for Digital SLR camera (NIKON/CANON) | WD-50: Camera Attachment for CANON |   | ※ Other Manufacturer's Products |
| | WD-51: Camrea Attachment for NIKON | | |
| CCD Camera | WAT-202D 1/3" Interface Transfer Sensor |  | ※ Other Manufacturer's Products |
| Beam Splitter | WD-60 Beam Splitter |  | ※ Other Manufacturer's Products |
| C-mount | WD-28 C-mount F=70 |  | ※ Other Manufacturer's Products |
| | WD-37 C-mount F=40 | | |
| | WD-38 C-mount F=55 | | |
| Applanation Tonometer | BB-45 Applanation Tonometer with Arm |   | BB-45 Applanation Tonometer with Arm BB-44 Applanation Tonometer Mount type |
| | BB-44 Applanation Tonometer Mount type | | |

Manufacturer



Ohira Co.,Ltd.

629-961 Niiborishinden, Minamiuonuma,
Niigata, 949-7135, Japan

Design and specifications are subject to change without notice.

Distributed by

AJINOMOTO

AJINOMOTO TRADING, INC.

SHIN-NIPPON Medical & Ophthalmic Instruments Dept.
EAST WING 7F, TFT BUILDING, 3-1-22 ARIAKE, KOTO-KU,
TOKYO 135-8071, JAPAN

TEL: 813-3528-4416 FAX: 813-3528-4426

http://www.shin-nippon.jp http://www.ajitrade.com



Value recognized
with each use.

The New Premium Standard
SLIT LAMP
SL-500